

Supporting Kansas City area congregations in Earth stewardship




Third Annual  
**SUSTAINABLE FACILITIES  
WORKSHOP**  
*For Congregations*

**Tap Hidden Savings:  
Sustainable Water Use**

Richard Yoder, PE  
August 7, 2013  
St. Paul's Episcopal Church  
40th & Main, KCMO




---

---

---

---

---

---

---

---



**Saving Water  
with WaterSense®**



Tara O'Hare - U.S. EPA  
July 2013

---

---

---

---

---

---

---

---



**WaterSense Information**



Visit us online!

- [www.epa.gov/watersense](http://www.epa.gov/watersense)
- [www.facebook.com/epawatersense](https://www.facebook.com/epawatersense)
- [www.twitter.com/epawatersense](https://twitter.com/epawatersense)

Questions?

E-mail: [watersense@epa.gov](mailto:watersense@epa.gov)  
Helpline: (866) WTR-SENS (987-7367)




---

---

---

---

---

---

---

---

Supporting Kansas City area congregations in Earth stewardship

Third Annual  
**SUSTAINABLE FACILITIES WORKSHOP**  
*For Congregations*



Richard Yoder, PE, SFP  
**UNO – CBA – NBDC**  
*CBA Chief Sustainability Officer*  
*P2RIC Director*  
6708 Pine St. MH200R  
Omaha, NE 68182  
402.554.2521  
ryoder@unomaha.edu  
[www.p2ric.org](http://www.p2ric.org)

R7 = IA, KS, MO, NE

Nebraska College of BUSINESS  
Omaha KANSAS

---

---

---

---

---


---

---

---

**POLLUTION PREVENTION P2R RESOURCES EXCHANGE**

P2Rx is a national network of regional centers that advance pollution prevention as the cornerstone of sustainability.



pprc

Pikes to Prairies  
POLLUTION PREVENTION  
EXCHANGE CENTER

ESRC  
Environmental Sustainability  
Resource Center

WSRPN  
Western Sustainability and  
Pollution Prevention Network  
Arizona, California, Hawaii, Nevada,  
Tribal Lands, Trust Territories

ZERO WASTE NETWORK

Nebraska College of BUSINESS  
Omaha KANSAS

---

---

---

---

---

---

---

---

**THE WASTE MANAGEMENT PYRAMID**



**Reduce & Reuse**  
Toxic Use Reduction  
Water Conservation  
Stop Leaks & Spills  
Best Management Practices  
Retrofit & Redesign  
Energy Efficiency

**Recycle**  
Separate  
Nutrify Filter

**Treat**  
Land Change

**Dispose**

Best Option  
2nd Option  
3rd Option  
Last Option

*"The greatest danger for most of us is not that our aim is too high and we miss it, but that it is too low and we reach it."*  
Michaelangelo

*Primum non nocere*  
First, do no harm.

---

---

---

---

---

---

---

---




---

---

---

---

---

---

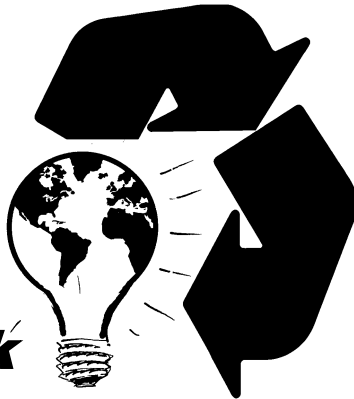
---

---

**reduce**

**reuse**

***rethink***




---

---

---

---

---

---

---

---




---

---

---

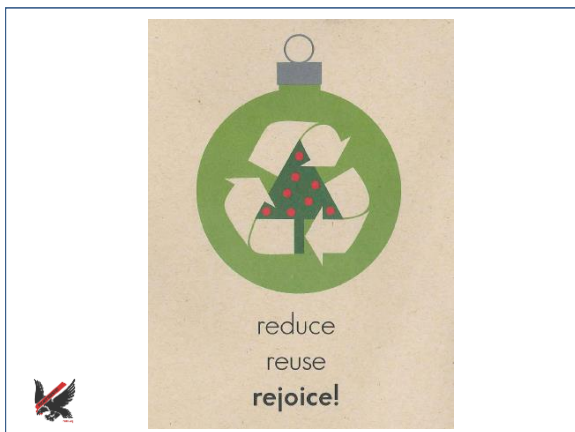
---

---

---

---

---



## IFMA's SFP Credential

IFMA – International Facility Managers Assn.

SFP – Sustainability Facilities Professional

<http://nbdc.unomaha.edu/sustainability/sfp.cfm>



## Who Should Pursue the SFP?

### Interested in sustainable practices?

- Facility management practitioners with a baseline of FM industry knowledge
- FM professionals who are transitioning into sustainability-related positions
- Related industry practitioners such as architects, designers and safety engineers
- Facility-related product and service providers
- CFMs and FMPs interested in expanding the depth of their expertise in the area of sustainable facility management
- LEED Professionals seeking CMP hours




---

---

---

---

---

---

---

---

## Why Pursue the SFP?

### YOU will benefit from the SFP

- Earn a sustainability credential created for facility managers by facility managers
- Improve the efficiency of your facility
- Learn to go beyond the low hanging fruit
- Apply innovative ideas to any industry and any building rating system
- Align resource-optimizing projects with corporate strategy and make the business case to the C-Suite
- Implement best practices to impact your triple bottom line




---

---

---

---

---

---

---

---

## Overview

- *Sustainability essential - Fishing*
- *Process: Plan, Do, Check*
- *Best practices*

---

---

---

---

---

---

---

---



## Fishing Game: Steps of Play

1. Decide on your team's long-term strategy.
2. With each decision round, select the number of fish you wish to harvest.
3. Record the number on a slip of paper, place on desk, wait until it is your turn to harvest.
4. Harvest requests will be filled in random order.
5. Keep your fish, fill out your request for the next round, starting again with Step 1.

---

---

---

---

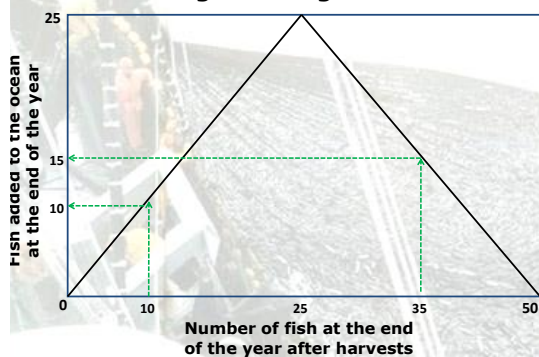
---

---

---

---

## Regenerating the Fish




---

---

---

---

---

---

---

---



© 2011 The Associated Press. All rights reserved.

---

---

---

---

---

---

---

---

## Fishing Game Resources

- For play amongst your family and friends outside of the classroom: <http://www.cloudinstitute.org/fish-game/>
- For current version of US Seafood Guide, and more information, <http://www.seafoodwatch.org> & [http://www.montereybayaquarium.org/cr/cr\\_seafoodwatch/sfw\\_recommendations.aspx](http://www.montereybayaquarium.org/cr/cr_seafoodwatch/sfw_recommendations.aspx)
- For a review of books on overfishing, "The Scales Fall", *The New Yorker* Aug 2, 2010 [http://www.newyorker.com/arts/critics/books/2010/08/02/100802crbo\\_books\\_kolbert](http://www.newyorker.com/arts/critics/books/2010/08/02/100802crbo_books_kolbert)

---

---

---

---

---

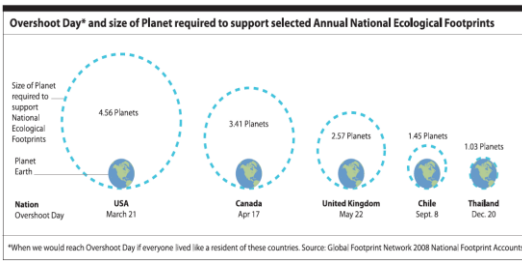
---

---

---



August 22, 2012




---

---

---

---

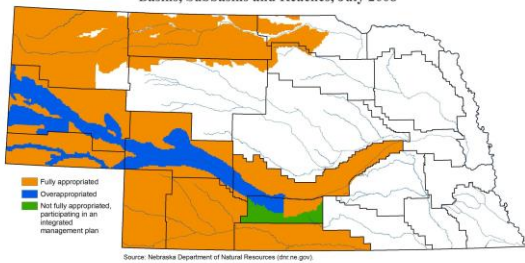
---

---

---

---

## DNR Designated Hydrologically-Connected Fully and Overappropriated Basins, Subbasins and Reaches, July 2008



This map was produced by the University of Nebraska-Lincoln. For additional information and an interactive version of this map, visit <http://water.unl.edu>

The University of Nebraska-Lincoln does not discriminate based on gender, age, disability, race, color, religion, marital status, ancestry, national origin, or sexual orientation.

The information presented on this map is the best available as of July 2008. To order a copy of this map, go to <http://water.unl.edu>. Any symbols or acronyms not defined in this map are defined in the 2008 Nebraska Department of Natural Resources map.

---

---

---

---

---

---

---

---






---

---

---

---

---

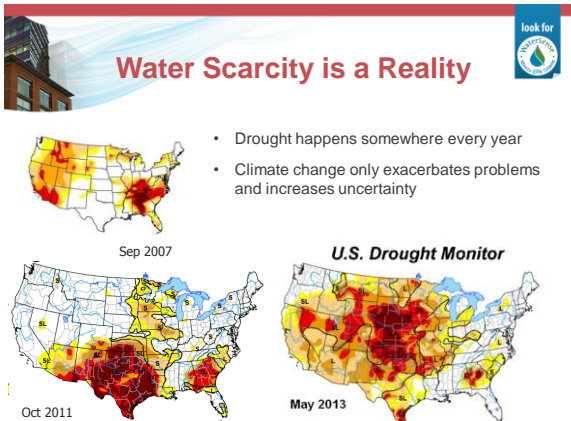
---

---

---

---

---




---

---

---

---

---

---

---

---

---

---

PublicRadio

### News for St. Louis

part of the digital network

News Programs Station Info Support

**Drought** 7:00 AM Sun JULY 28, 2013

#### Drought Still A Threat To Missouri This Year

By MARSHALL GRIFFIN

Missouri's overall drought picture is vastly improved this summer over what it was during last year's extreme heat and dry conditions. Still, drought remains an immediate threat to portions of the Show-Me State.

**U.S. Drought Monitor**

Connect with Us

Find us on Facebook Follow us on Twitter

Podcasts & RSS Feeds

All Content Podcast RSS

View all podcasts & RSS feeds

---

---

---

---

---

---

---

---

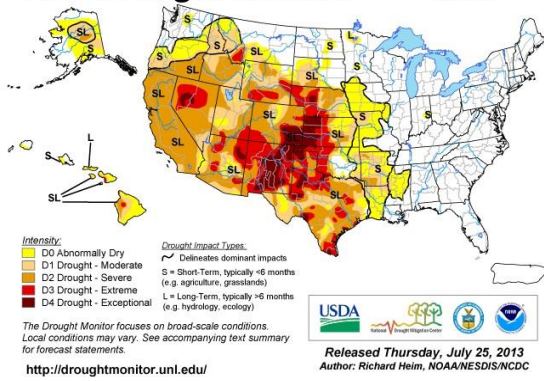
---

---



## U.S. Drought Monitor

July 23, 2013  
Valid 7 a.m. EDT



## U.S. Drought Monitor

July 30, 2013  
Valid 7 a.m. EDT

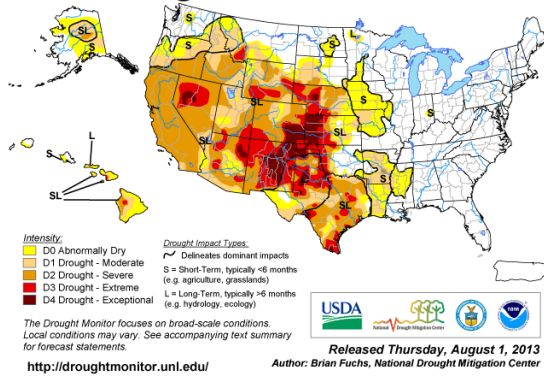
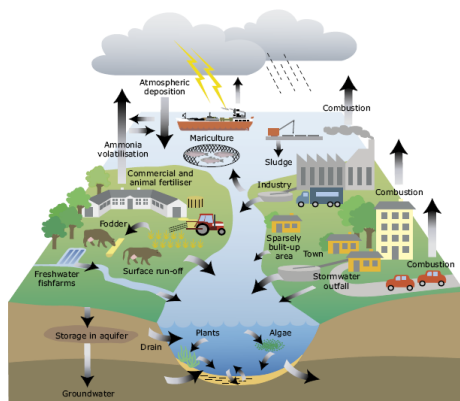
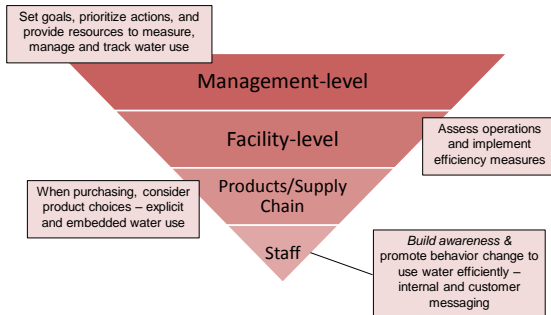


Figure 2.1 Overview of the aquatic nitrogen cycle and sources of pollution with nitrogen



10

## Recognize that reducing water use requires action in every part of an organization




---

---

---

---

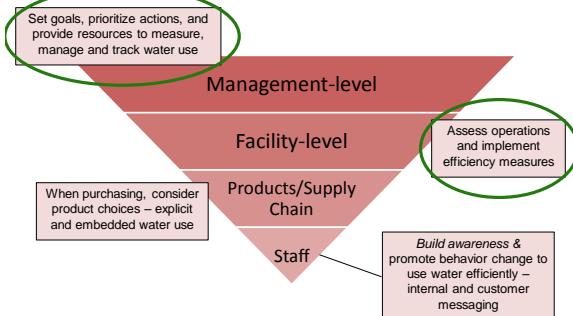
---

---

---

---

## Recognize that reducing water use requires action in every part of an organization




---

---

---

---

---

---

---

---

## Set Goals - Plan

- Tie to mission & strategy
  - Community leadership
- Secure buy-in: You are not alone
- Do a baseline assessment
- Set goals: Save money

---

---

---

---

---

---

---

---





## Water Management Planning

- Step 1: Making a Commitment
- Step 2: Assessing Facility Water Use
- Step 3: Setting and Communicating Goals
- Step 4: Creating an Action Plan
- Step 5: Implementing the Action Plan
- Step 6: Evaluating Progress
- Step 7: Recognizing Achievement

Aligns with ENERGY STAR's Guidelines for Energy Management...so just add water to your programs!

[http://www.energystar.gov/index.cfm?c=business.bus\\_index](http://www.energystar.gov/index.cfm?c=business.bus_index)

---

---

---

---

---

---

---

---

---

---



## Understanding Facility Water Use

- First step = Establish benchmark.
- Track information from submeters and invoices to establish how water use is distributed.



© 2011 IFMA  
All rights reserved  
www.ifma.org/sfp

Slide 3-2-35




---

---

---

---

---

---

---

---

---

---

**Table 1-4 Action Plan Water Use Reduction Opportunity Checklist**

Water Use Reduction Opportunity/Project	Reference Section	Already Implemented	Underway/Complete	Not Applicable
		1	2	3
<b>Water Use Monitoring and Education</b>				
Read water meter and understand metering water costs	2.2			
Install submeters on any major water-using equipment, systems, or processes	2.2			
Implement a leak detection and repair program	2.3			
Educate facility staff building occupants, employees, and visitors on water management program goals and initiatives	2.4			
Review, understand, and share information on codes, standards, and voluntary programs for water efficiency	2.5			
<b>Sanitary Fixtures and Equipment</b>				
Replace old sink water valves with WaterSense-labeled models	3.2			
Replace old flushometer valve-type toilet flushing greater than 1.6 gallons per flush (gpf) with high-efficiency models, and retrofit urinals dual flush conversion devices on 1.6 gpf flushometer valve fixtures	3.2			
Replace old flushing urinals with WaterSense-labeled models	3.3			
Educate facility staff on proper use of the private restrooms with WaterSense-labeled models and install 0.5 gallons per minute (gpm) flow restrictors in restrooms in public rest settings	3.4			
Replace old showerheads with WaterSense-labeled models	3.5			
Repair only full leaks of faucets	3.6			
Replace old single-lever hot/cold showers with ENERGY STAR qualified models to conserve the water factor when not showering longer or more industrial shower heads and	3.6			
<b>Commercial Kitchen Equipment</b>				
Replace old ice machines with ENERGY STAR qualified models				
Replace old steam cookers with ENERGY STAR qualified models				
Load steam cookers, steam kettles, and combi ovens to capacity				
Switch to convection combination ovens, microwaves, and steam kettles				
Replace old water-cooled walk-in coolers with a water model				
Install in-line flow restrictors to reduce leakage with 10-15 gpm				

### Checklists & Case Studies

Handouts from NC DENR, WaterSense, AZ

**Laboratory and Medical Equipment Case Study**

To learn how Providence St. Peter Hospital in Olympia, Washington, saved 31 million gallons of water by installing water-efficient laboratory and medical equipment and implementing many additional best management practices described in WaterSense at Work, read the case study in Appendix A.

---

---

---

---

---

---

---

---

---

---



## Facility Water Management Benchmarking

- It can be as simple as creating a spreadsheet where monthly readings from a main water meter can be entered.

Main Meter				
Start Date	End Date	Gallons	Liters	Cost
6/30/2009	7/30/2009	414,392	1,566,402	\$3,592.78
6/1/2009	6/29/2009	382,228	1,444,822	\$3,329.21
4/30/2009	5/31/2009	522,104	1,973,553	\$4,484.87
3/31/2009	4/29/2009	454,784	1,719,084	\$4,111.25
3/2/2009	3/30/2009	412,148	1,557,919	\$3,729.94
1/30/2009	3/1/2009	562,496	2,126,235	\$5,068.09
12/31/2008	1/29/2009	388,212	1,467,441	\$3,517.20
11/28/2008	12/30/2008	388,212	1,467,441	\$3,521.08

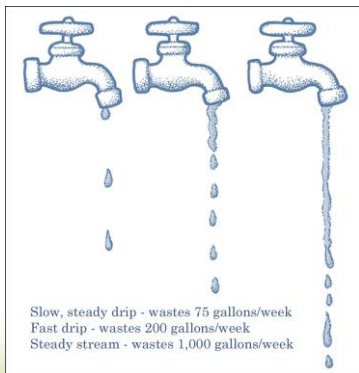
© 2011 IFMA  
All rights reserved  
www.ifma.org/stp

Slide 3-3-37

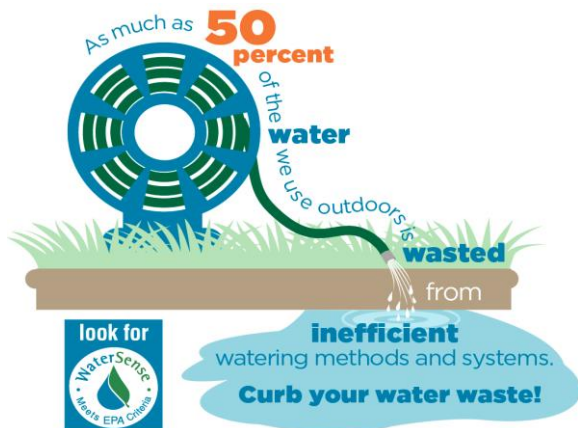


### A Rebate for Low-Flush Toilets

[http://green.blogs.nytimes.com/2012/03/16/a-rebate-for-low-flush-toilets/?\\_r=0](http://green.blogs.nytimes.com/2012/03/16/a-rebate-for-low-flush-toilets/?_r=0)



<http://www.aetc.af.mil/shared/media/galleries/bires/AFG-090206-007.jpg>




---

---

---

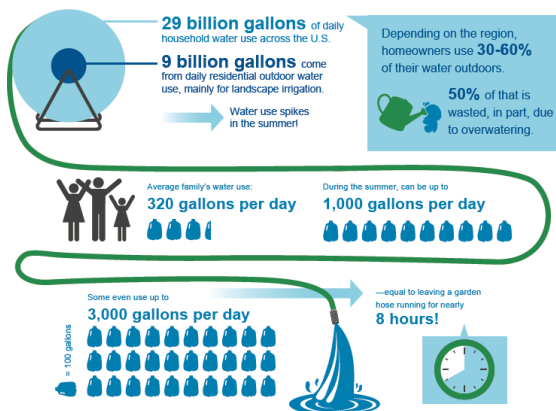
---

---

---

---

---




---

---

---

---

---

---

---

---




---

---

---

---

---

---

---

---

Greeley Showerhead Exchange:  
<http://greeleygov.com/water/AnnouncementsDisplay.aspx?ID=275>





## Water Management and Planning

- Measure water use with properly installed meters and sub-meters
- Conduct a facility water audit
- Set efficiency goals
- Identify and implement water efficiency projects
- Incorporate water efficiency into procurement language and policies
- Track water usage in Portfolio Manager




---

---

---

---

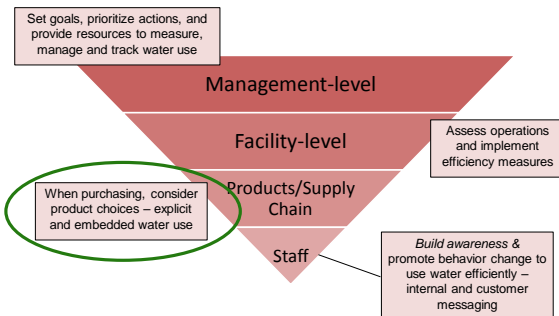
---

---

---

---

## Recognize that reducing water use requires action in every part of an organization




---

---

---

---

---

---

---

---



## WaterSense Label Assures Confidence



### Products must:

- Offer equivalent or superior performance
- Be about 20 percent more water-efficient than conventional models
- Realize water savings on a national level
- Provide measurable results
- Achieve water efficiency through several technology options
- Be effectively differentiated by the WaterSense label
- Be independently certified for performance and efficiency

---

---

---

---

---

---

---

---



## WaterSense Labeled Products



**Flushing Urinals**  
(≤0.5 gpf)



**Lavatory Faucets**  
(≤1.5 gpf)



**Irrigation Controllers**



**New Homes**



**Tank-Type Toilets**  
(≤1.28 gpf)



**Showerheads**  
(≤ 2.0 gpm)

**More than 9,000 Labeled Product Models**



Water factors are also included in many ENERGY STAR qualified products

look for



---

---

---

---

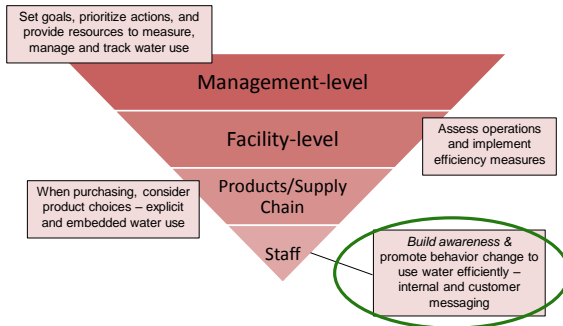
---

---

---

---

## Recognize that reducing water use requires action in every part of an organization




---

---

---

---

---

---

---

---

### Simple Things We Can All Do

**Step on it:**  
Step on the lawn. If the grass springs back, it doesn't need water.

**Leave it long:**  
Longer grass promotes a more drought-resistant lawn, reduces evaporation, and lowers weeds.

**Take a sprinkler break:**  
Grass isn't really meant to be kept green in the summer.

**Simple Things Irrigation System Owners Can Do**  
Homes with automatic irrigation systems can use about 50% more water outdoors.

---

---

---

---

---

---

---

---

**Timing is everything:**

Plan to water in the early morning or evening to beat daytime evaporation.

**Go with a pro:**

Contractors certified through a WaterSense labeled program can audit, install, or maintain home irrigation systems so no water is wasted.

**Look for the label:**

If your system uses a clock timer, consider upgrading to a WaterSense labeled controller that acts like a thermostat for your lawn, using local weather data to determine when and how much to water. They can reduce irrigation water use by 10%, saving nearly 8,800 gallons of water per year.

**Tune up your system:**

Inspect irrigation systems, and fix leaks and broken or clogged sprinkler heads. Make sure you're watering the lawn, not the sidewalk or driveway!

Just 1 broken sprinkler head could waste up to **25,000** gallons of water and **\$80+** over a 6-month irrigation season — the cost of about 300 gallonful buttes.

Page of BUSINESS SUSTAINABILITY

## Simple Things Irrigation System Owners Can Do

Homes with automatic irrigation systems can use about **50%** more water outdoors.

### Timing is everything:

Plan to water in the early morning or evening to beat daytime evaporation.



### Go with a pro:

Contractors certified through a WaterSense labeled program can audit, install, or maintain home irrigation systems so no water is wasted.

### Look for the label:

If your system uses a clock timer, consider upgrading to a WaterSense labeled controller that acts like a thermostat for your lawn, using local weather data to determine when and how much to water. They can reduce irrigation water use by 15%, saving nearly **8,800 gallons** of water per year.



### Tune up your system:

Inspect irrigation systems, and fix leaks and broken or clogged sprinkler heads.

Make sure you're watering the lawn, not the sidewalk or driveway!



Just 1 broken sprinkler head could waste up to **25,000** gallons of water and **\$90+** over a 6-month irrigation season — the cost of about 300 daffodil bulbs.

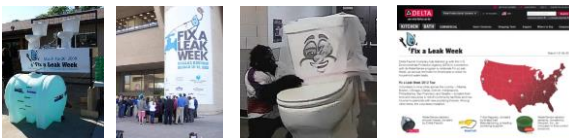


## Bending the Curve

- Are you weird?  
<http://www.wastingwaterisweird.com/>
- God & St. Francis discuss lawns



- EPA's annual reminder for Americans to check their homes for common leaks – **third week of March**
- Minor water leaks account for more than 1 trillion gallons of water wasted each year in U.S. households
  - Average house can leak 10,000 gallons per year – 12% of water bill
- Partners hold events across the country

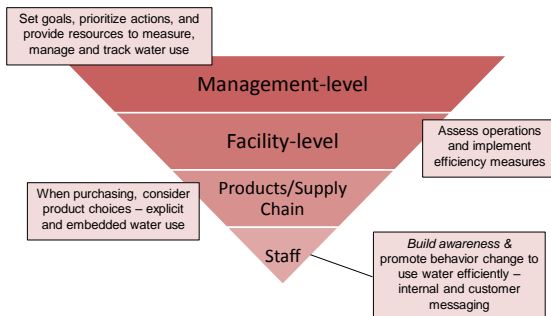




- Umbrella campaign for WaterSense consumer outreach with an identifiable brand
- Theme: Individuals can make a difference
- Campaign components include:
  - Print PSAs
  - National media outreach
  - Spokesgallon Flo
  - Local media events
  - Online and social media
  - Collateral materials



## Recognize that reducing water use requires action in every part of an organization



- Step 1: Making a Commitment
- Step 2: Assessing Facility Water Use
- Step 3: Setting and Communicating Goals
- Step 4: Creating an Action Plan
- Step 5: Implementing the Action Plan
- Step 6: Evaluating Progress
- Step 7: Recognizing Achievement

Aligns with ENERGY STAR's Guidelines for Energy Management...so just add water to your programs!  
[http://www.energystar.gov/index.cfm?c=business.bus\\_index](http://www.energystar.gov/index.cfm?c=business.bus_index)



## Monitor Usage and Calculate Savings

- Contact your local water and energy utilities for rebates and incentives for efficient technologies
- Evaluate water and energy efficiency together for the best results
  - Can reduce payback periods and improve ROI

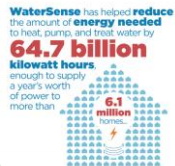


## Tools

- EPA WaterSense ties into EnergyStar
- Green Globes Water Consumption Calculator, "Project Water Use" tab on download

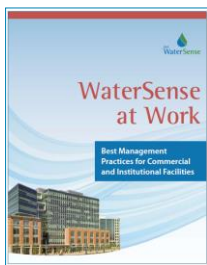


## Savings Add Up! 2006-2012





## Water Efficiency Best Management Practices



- Water management planning
- Water use monitoring and education
- Sanitary fixtures and equipment
- Commercial kitchen equipment
- Outdoor water use
- Mechanical systems
- Laboratory and medical equipment
- Onsite alternative sources of water

---

---

---

---

---

---

---

---

## Water Efficiency Best Management Practices

- Each of 36 BMPs provides:
  - An overview of the technology
  - Operation, maintenance, and user education tips
  - Retrofit and replacement options
  - Calculations for potential water, energy, and dollar savings and payback
- 7 case studies outline success stories in major BMP areas




---

---

---

---

---

---

---

---

## WaterSense Resources

- CI Resources – including BMPs and other tools - <http://www.epa.gov/watersense/commercial>
- CI businesses and institutions not currently eligible for WaterSense partnership
- Consider collaborating with water utilities and other promotional partners




---

---

---

---

---

---

---

---

## Outdoor Water Use Tools

- New (and old mini) infographic
- Outdoor water use fact sheet
- Irrigation controller fact sheet
- Bill stuffers (English/Spanish)
  - Wasting water as "Most Boring Way to Harm the Environment"
  - Be smart: Know how much water your yard needs to grow
- Facts and tips to reduce outdoor water use



64

---

---

---

---

---

---

---

---

## Drought Tools

- Use when needed in times of drought:
  - Updated drought fact sheet
  - "Simple Steps to Save Water" brochure
- Five simple reminders from WaterSense:
  - Follow the rules.
  - Check for leaks.
  - Consider an upgrade.
  - Wait to hydrate.
  - Go the extra mile.



65

---

---

---

---

---

---

---

---

## Promoting WaterSense Labeled Products During a Drought

### asian avenue magazine SEVERE DROUGHT CALLS FOR MANDATORY WATERING RESTRICTIONS IN DENVER

- Tips to save even more water:
1. Change over to high-efficiency rotary nozzles (and get a rebate from Denver Water for doing so). Visit [www.denverwater.org/hibates](http://www.denverwater.org/hibates).
  2. Toilets are 25 percent of your indoor water use. Get a rebate from Denver Water for installing a WaterSense toilet. [www.denverwater.org/hibates](http://www.denverwater.org/hibates).



City Utilities of Springfield's WaterSense labeled toilet rebate promotion



66

---

---

---

---

---

---

---

---





- **Follow the rules.** Water restrictions are put in place to save limited supplies for firefighting, health care, and those who need it most.
- **Check for leaks.** Easy-to-fix leaks could be robbing nearly 1,000 gallons of water per month from your home.
- **Consider an upgrade.** If you're thinking about a bathroom update, now is the time to replace water-wasting fixtures with high-performing, WaterSense labeled models.
- **Wait to hydrate.** Grass shouldn't be bright green year-round—it's natural for your landscape to go dormant in summer's hottest months, so you don't need to water as frequently.
- **Go the extra mile.** If you've done all you can to be water-efficient, you can get creative by reusing water from dish tubs or ice buckets on your flowers.

67

---

---

---

---

---

---

---

---



- Review your water bill and track water use in Portfolio Manager
- Assess water use in all facilities to identify savings opportunities indoors and outdoors - *WaterSense at Work* can help to get started
  - **Check regularly for leaks** and, when found, repair them promptly
  - **Optimize your cooling systems** and determine if they can provide or use alternative onsite sources of water
  - Consider replacing bathroom fixtures with more **efficient models** and check automatic sensors to ensure they are **operating properly** to avoid unnecessary water use
  - Consider **water smart landscaping and irrigation practices** including WaterSense labeled weather-based irrigation controllers

---

---

---

---

---

---

---

---



- **Talk to your water (& energy) utilities** – they might have \$ incentives or they might want to collaborate on outreach and education
- **Communicate your actions** beyond the walls of your building – let the public know what you are doing
- **Use your power** to help educate your parishioners, staff, friends, and community about the importance of water efficiency



Arizona's Famous Running Toilet:  
Leaky Loo McFlapper

---

---

---

---

---

---

---

---



## Water Use Education and Sanitary Fixtures

- Water use education
  - Regularly check systems and fixtures for leaks
  - Encourage employees to report leaks and wasted water
  - Educate employees and visitors about how to save water at the point of use
- Sanitary fixtures and equipment
  - Restrooms, lounges, laundry and fitness facilities
  - Choose WaterSense labeled and ENERGY STAR qualified products

Introduction to Water Use Monitoring and Education.....
Metering and Submetering.....
Leak Detection and Repair.....
User Education and Facility Outreach.....
Codes, Standards, and Voluntary Programs for Water Efficiency.....
Introduction to Sanitary Fixtures and Equipment.....
Toilets.....
Urinals.....
Faucets.....
Showerheads.....
Laundry Equipment.....

70

---

---

---

---

---

---

---

---

---

---



## Commercial Kitchens

Introduction to Commercial Kitchen Equipment.....
Commercial Ice Machines.....
Combination Ovens.....
Steam Cookers.....
Steam Kettles.....
Wok Stoves.....
Dipper Wells.....
Pre-Rinse Spray Valves.....
Food Disposals.....
Commercial Dishwashers.....
Wash-Down Sprayers.....

- Use ENERGY STAR qualified products
  - Dishwashers, ice machines, steam cookers, etc.
- Install efficient pre-rinse spray valves
- Evaluate food disposal systems to avoid continuous water flow
- Monitor steam cooker and steam kettle systems to repair leaks and reuse condensate water




---

---

---

---

---

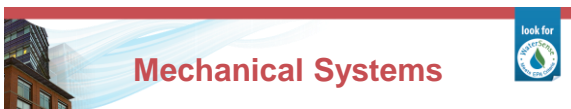
---

---

---

---

---



## Mechanical Systems

- Eliminate single-pass cooling systems
- Manage heating, cooling, and steam systems
  - Seal and insulate building envelope to reduce load
  - Optimize water use in boilers and cooling towers
  - Maximize cooling tower cycles of concentration
  - Sub-meter cooling tower make-up water to measure evaporation losses
  - Capture and reuse boiler and steam condensate with a recovery system
  - Regularly check for systems for leaks

Introduction to Mechanical Systems.....
Single-Pass Cooling.....
Cooling Towers.....
Chilled Water Systems.....
Boiler and Steam Systems.....

72

---

---

---

---

---

---

---

---

---

---



## Outdoor Water Use

- Landscaping
  - Use regionally-appropriate plants
  - Avoid planting "strip grass" in areas difficult to maintain
- Irrigation
  - Water wisely with weather- or sensor-based irrigation controllers
  - Install meters to track and measure use
  - Consider alternative water sources for irrigation
- Vehicle Wash Systems
  - Reuse and recycle rinse water

Introduction to Outdoor Water Use.....  
 Landscaping.....  
 Irrigation.....  
 Commercial Pool and Spa Equipment....  
 Vehicle Washing.....




---

---

---

---

---

---

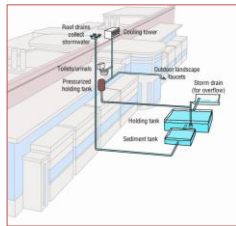
---

---



## Alternative Water Sources

- Consider where water can be reused on site as an alternative to potable water – considering possible state/local restrictions
- Potential sources include
  - Rainwater/stormwater
  - Treated gray water
  - Condensate and reject water
  - Cooling equipment blowdown
- Potential uses include
  - Irrigation
  - Toilet/urinal flushing
  - Cooling tower make-up




---

---

---

---

---

---

---

---

### Discussion Question

Choose the three options that are water-efficient irrigation methods:

- A. Pop-up spray
- B. Drip irrigation
- C. Moisture sensor
- D. Time clock
- E. Automatic timers
- F. Weather data

Answers: B, C, F

---

---

---

---

---

---

---

---



### Discussion Question

Graywater is most often used for \_\_\_\_\_?

- A. Drinking
- B. Irrigation
- C. Dishwashers
- D. Swimming pools

Answer: B




---

---

---

---

---

---

---

---



### Improving Efficiency of Fixtures and Appliances

- ▶ Test and adjust building water pressure.
- ▶ Lower fixture flow.
- ▶ Implement an aggressive maintenance program and leak reporting system.
- ▶ Use water-efficient appliances and equipment.

© 2011 IFMA  
All rights reserved  
www.ifma.org/sfp

Slide 3-2-77




---

---

---

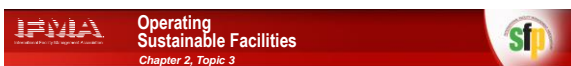
---

---

---

---

---



### Water-Conserving Landscaping

- ▶ Xeriscaping principles:
  - Amending soil
  - Retarding evaporation
  - Weeding
  - Choosing native plants
  - Using turf selectively
  - Planting with irrigation in mind



© 2011 IFMA  
All rights reserved  
www.ifma.org/sfp

Slide 3-2-78




---

---

---

---

---

---

---

---

## MARC Guide to local flora

### • 10 Natives for the Kansas City Region

- Bluestar
- Blue False Indigo
- Willowleaf Sunflower
- Smooth Hydrangea
- Spicebush
- Cardinal Flower
- Ninebark
- Fringe Tree
- Christmas Fern
- Sourgum



Nebraska College of BUSINESS  
UNIVERSITY

---

---

---

---

---

---

---

---



### Other Water Resources

- ▶ Green Infrastructure:  
[http://water.epa.gov/infrastructure/greeninfrastructure/gi\\_what.cfm](http://water.epa.gov/infrastructure/greeninfrastructure/gi_what.cfm)
- ▶ Tools:  
[http://water.epa.gov/infrastructure/greeninfrastructure/gi\\_modelingtools.cfm](http://water.epa.gov/infrastructure/greeninfrastructure/gi_modelingtools.cfm)
- ▶ Water Efficiency Manual - NC  
– <http://infohouse.p2ric.org/ref/01/00692.pdf>




---

---

---

---

---

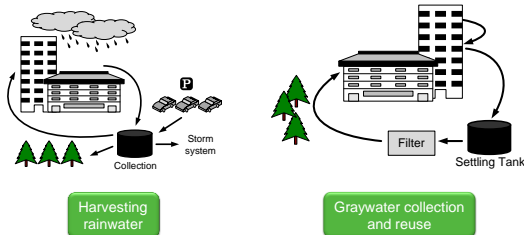
---

---

---



### Reusing and Recycling Water



© 2011 IFMA  
All rights reserved  
[www.ifma.org/sfp](http://www.ifma.org/sfp)

Slide 3-2-81




---

---

---

---

---

---

---

---



### Discussion Question

Which of the following are examples of measures to increase the efficient use of water? *(Select three.)*

- A. Lower fixture flow.
- B. Install hand sanitizer dispensers.
- C. Choose native plants.
- D. Use automatic settings of irrigation systems after setting controllers to deliver only as much water as needed and no more.
- E. Increase the frequency of water fixture maintenance.

**Answer: A, C and D**

© 2011 IFMA  
All rights reserved  
www.ifma.org/sfp

Slide 3-2-82




---

---

---

---

---

---

---

---



### Sustainable Sites Initiative Guidelines



- ▶ Regulating global and local climates
- ▶ Cleaning air and water
- ▶ Continually regenerating habitats
- ▶ Recycling waste
- ▶ Providing aesthetic enjoyment

© 2011 IFMA  
All rights reserved  
www.ifma.org/sfp

Slide 3-8-83




---

---

---

---

---

---

---

---



### Sustainable Sites Resources

- ▶ Sustainable Sites Report/Guide:  
<http://www.sustainablesites.org/report/>
- ▶ Green Infrastructure:  
[http://water.epa.gov/infrastructure/greeninfrastructure/gi\\_what.cfm](http://water.epa.gov/infrastructure/greeninfrastructure/gi_what.cfm)
- ▶ Tools:  
[http://water.epa.gov/infrastructure/greeninfrastructure/gi\\_modelingtools.cfm](http://water.epa.gov/infrastructure/greeninfrastructure/gi_modelingtools.cfm)




---

---

---

---

---

---

---

---



## Improve the Management of Stormwater



- ▶ Maintain the integrity of stormwater control mechanisms.
- ▶ Capture and reuse stormwater for facility purposes if permitted by local regulations.
- ▶ Identify and correct grading issues.
- ▶ Increase permeable surfaces.
- ▶ Use fertilizers and pesticides sparingly.
- ▶ Add landscaping features to filter and clean stormwater.

© 2011 IFMA  
All rights reserved  
www.ifma.org/stp

Slide 3-8-85




---

---

---

---

---

---

---

---



## WaterSense Information

Visit us online!

- [www.epa.gov/watersense](http://www.epa.gov/watersense)
- [www.facebook.com/epawatersense](https://www.facebook.com/epawatersense)
- [www.twitter.com/epawatersense](https://www.twitter.com/epawatersense)

Questions?

E-mail: [watersense@epa.gov](mailto:watersense@epa.gov)

Helpline: (866) WTR-SENS (987-7367)




---

---

---

---

---

---

---

---

Supporting Kansas City area congregations in Earth stewardship

Third Annual  
**SUSTAINABLE FACILITIES WORKSHOP**  
*For Congregations*

Richard Yoder, PE, SFP  
**UNO – CBA – NBDC**  
*CBA Chief Sustainability Officer*  
*P2RIC Director*  
6708 Pine St. MH200R  
Omaha, NE 68182  
402.554.2521  
[ryoder@unomaha.edu](mailto:ryoder@unomaha.edu)  
[www.p2ric.org](http://www.p2ric.org)

R7 = IA, KS, MO, NE

Nebraska College of BUSINESS  
Omaha UNIVERSITY

---

---

---

---

---

---

---

---





---

---

---

---

---

---

---